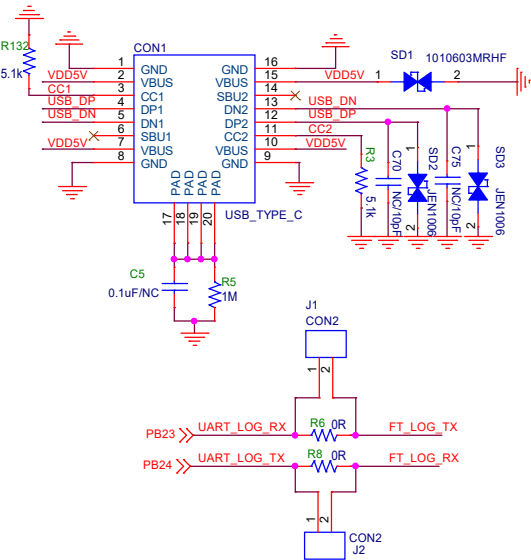
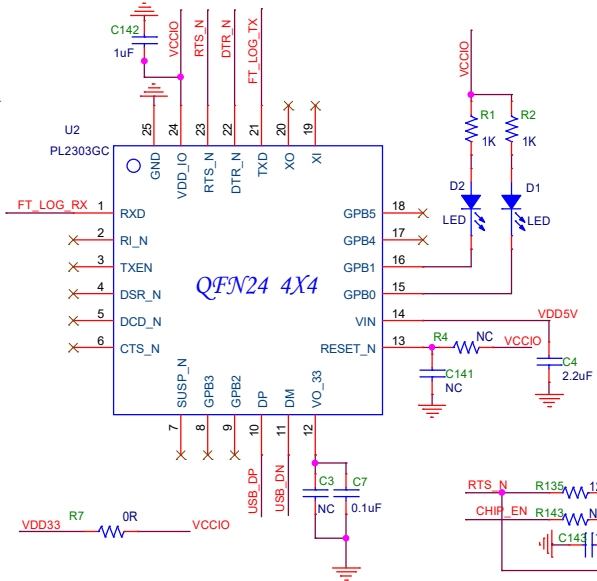


USB & POWER

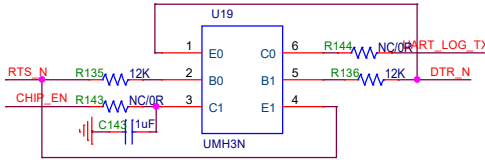
USB TYPE C (Device and FT232)



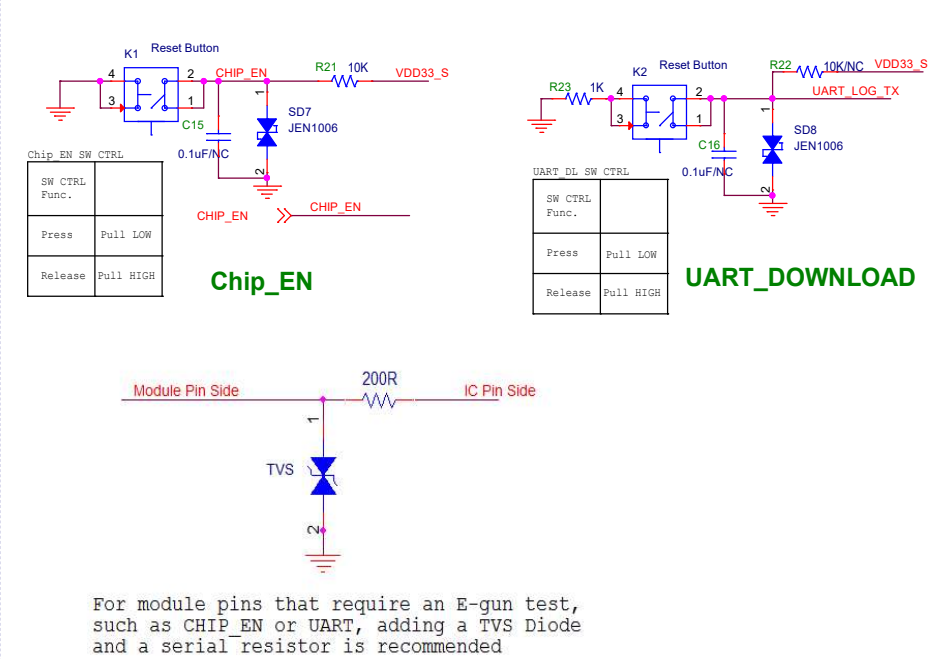
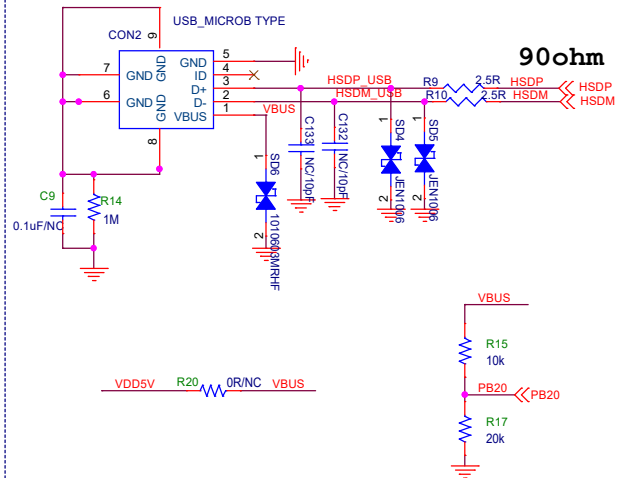
PL2303GC QFN24 4X4 USB TO UART



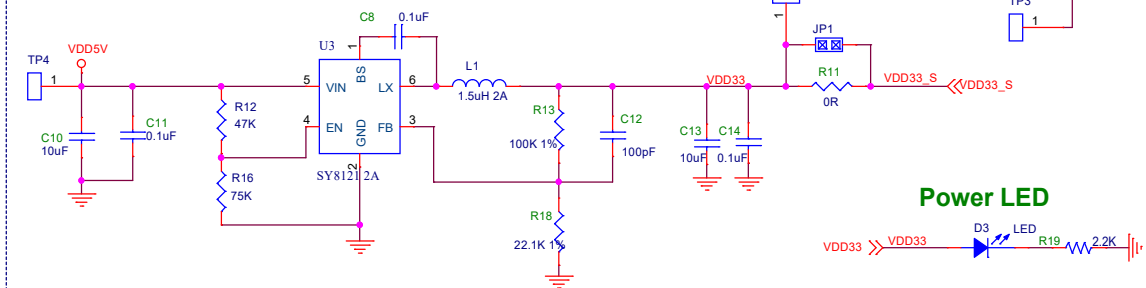
Auto-download Circuit



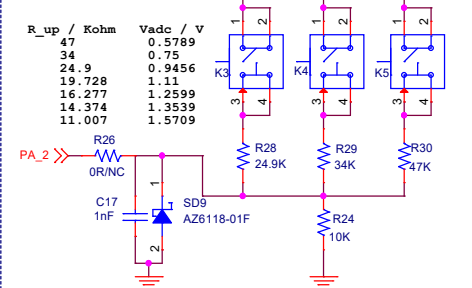
USB (micro-B)



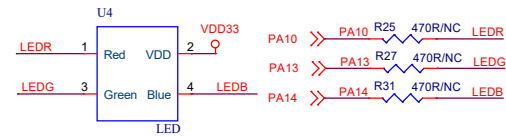
5V --> 3.3V SWR



USER KEY



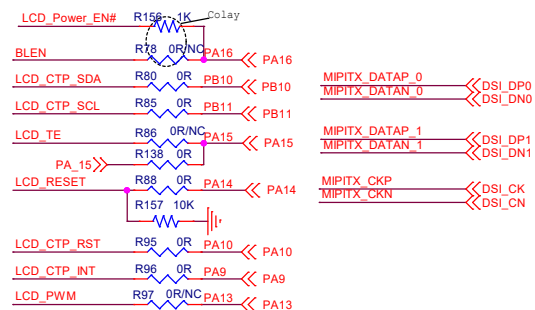
USER LED



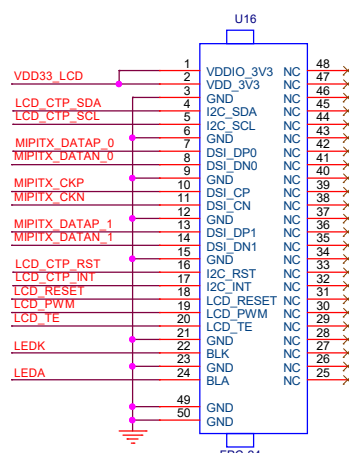
For module pins that require an E-gun test, such as CHIP EN or UART, adding a TVS Diode and a serial resistor is recommended

Peripheral

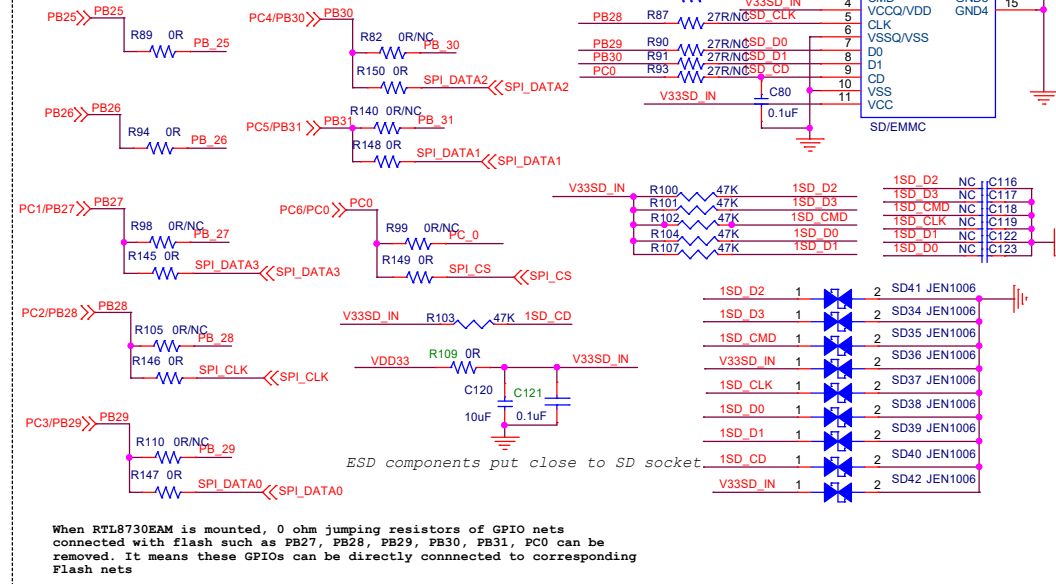
MIPI DSI



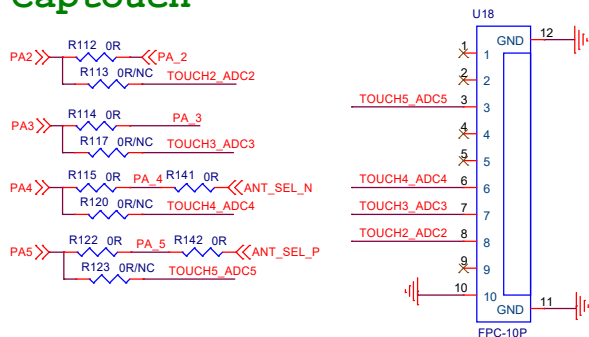
4 INCH TFT LCD



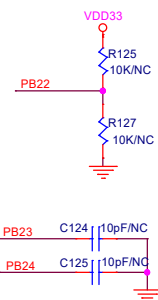
SD Card/EMMC



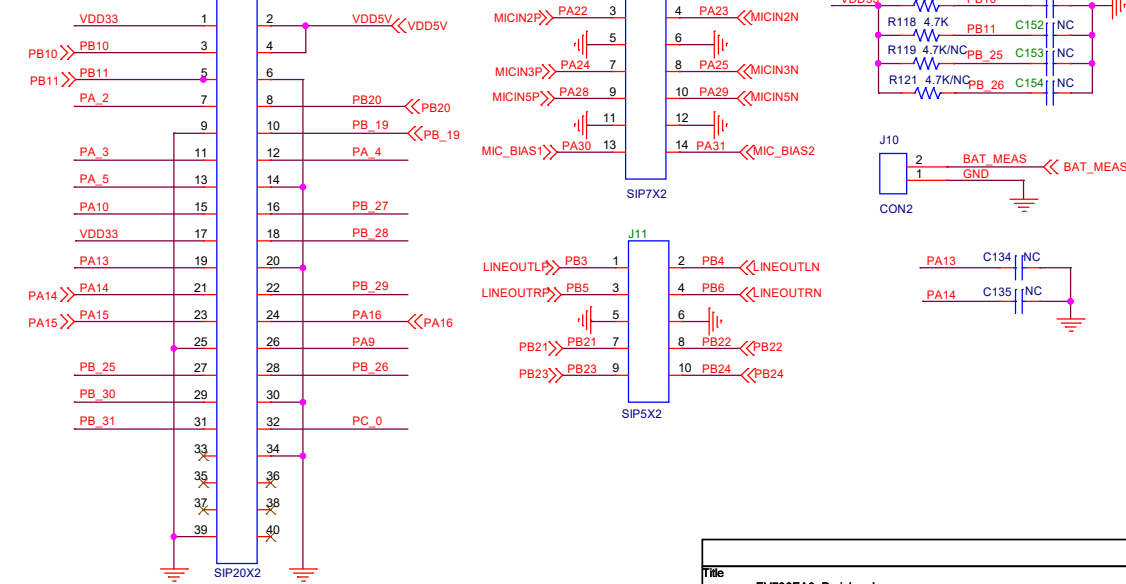
Captouch



Reserve for internal test

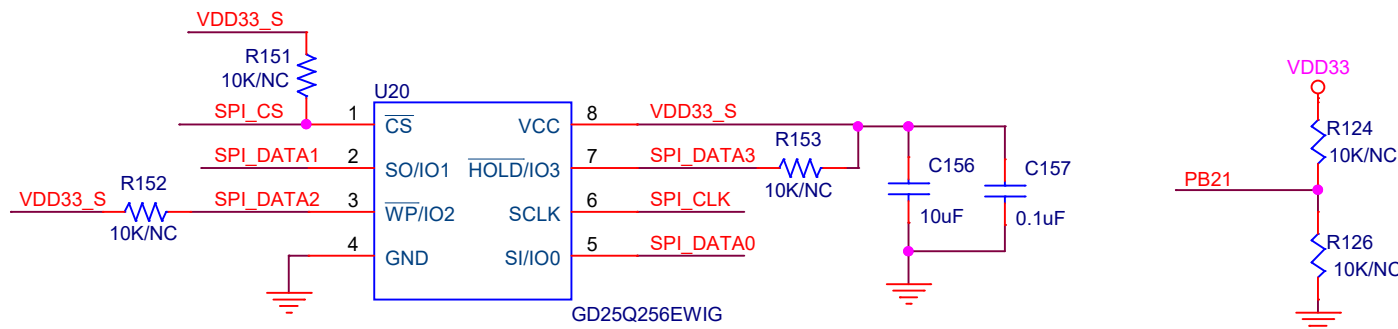
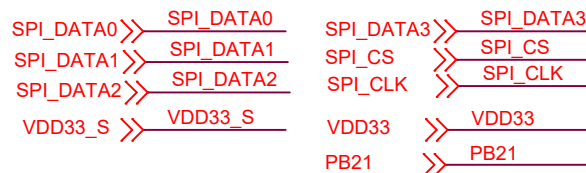


GPIOs



Title			EV730EA0 Peripheral
Size	Document Number	Rev	
A3	Ver6.1	6.0	
Date:	Tuesday, July 29, 2025	Sheet	4 of 5

External FLASH



Importance!

1, External flash is only needed for RTL8730EAM, not for RTL8730EAH.
It's necessary to configure the correct pull-up or pull-down.
resistor for PB21 according to the external flash type, which means:

High for NOR flash and Low for NAND flash.

NOR FLASH	PULL UP	R124 Mounted
NAND FLASH	PULL DOWN	R126 Mounted

Title		
EV730EA0_External_FLASH		
Size A	Document Number <Doc>	Rev <RevCode>
Date:	Tuesday, July 29, 2025	Sheet 5 of 5