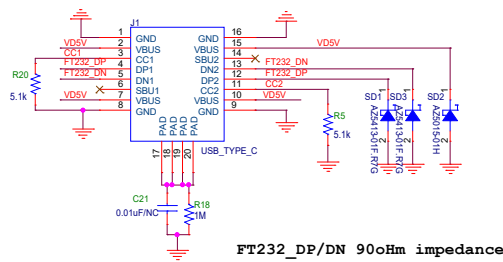
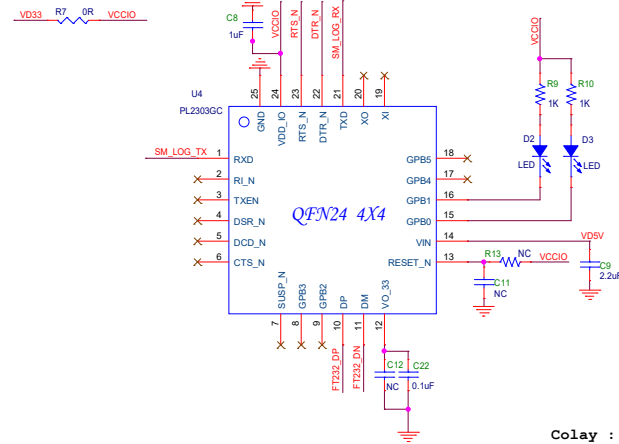


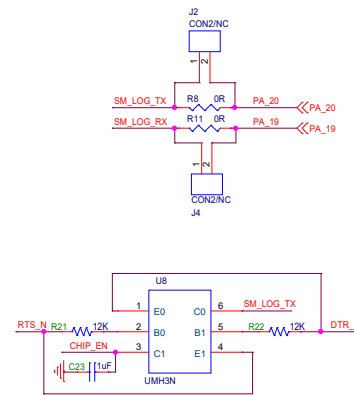
USB TypeC IF (Power and FT232)



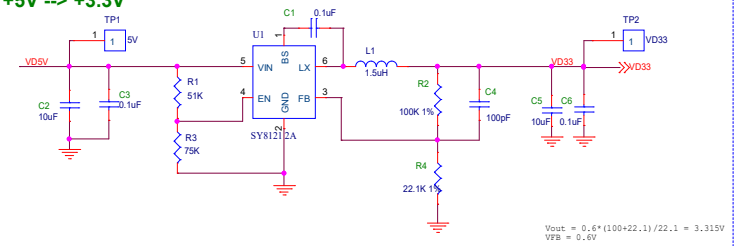
PL2303GC QFN24 4X4 USB TO UART



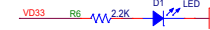
Colay : USB to UART circuit & USB2UART Module



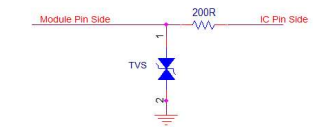
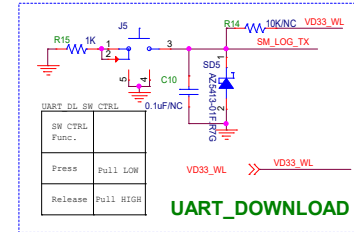
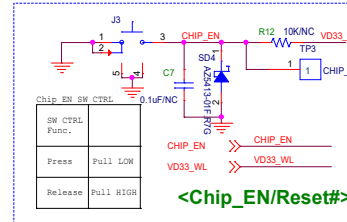
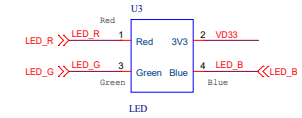
+5V --> +3.3V



Power indicator

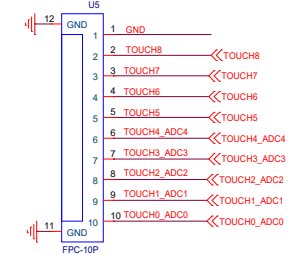


USER LED



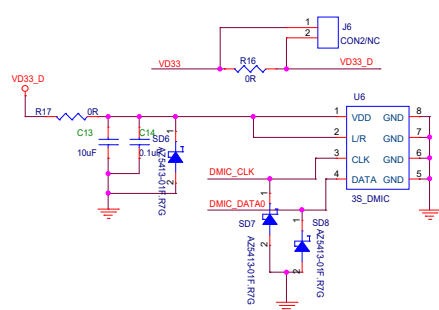
For module pins that require an E-gun test, such as CHIP_EN or UART, adding a TVS Diode and a serial resistor is recommended

CAP TOUCH IF

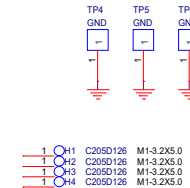
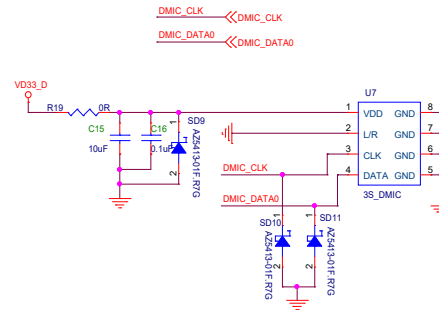


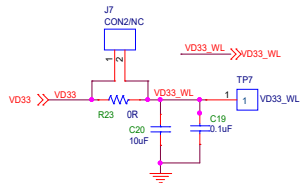
DMIC

L/R=HIGH, CLK=HIGH, DATA=VALID

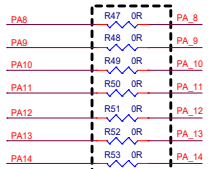
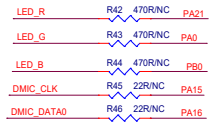
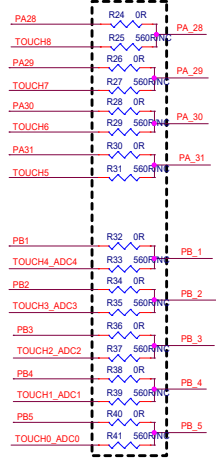


L/R=LOW, CLK=LOW, DATA=VALID

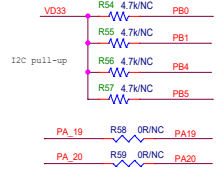




Colay, and avoid bifurcate routing on TOUCH_ADC



Module with RTL8720EAM or RTL8710ECM,
these resistors NC



RSV for internal test

