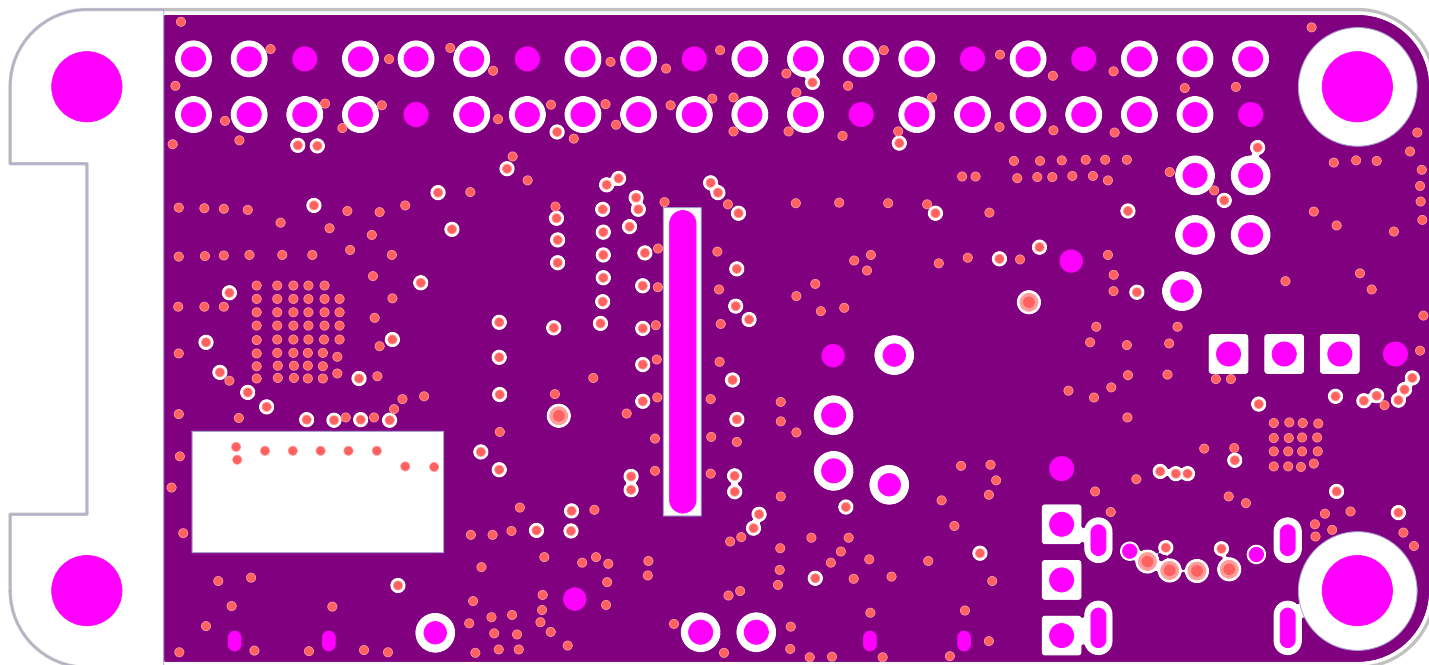


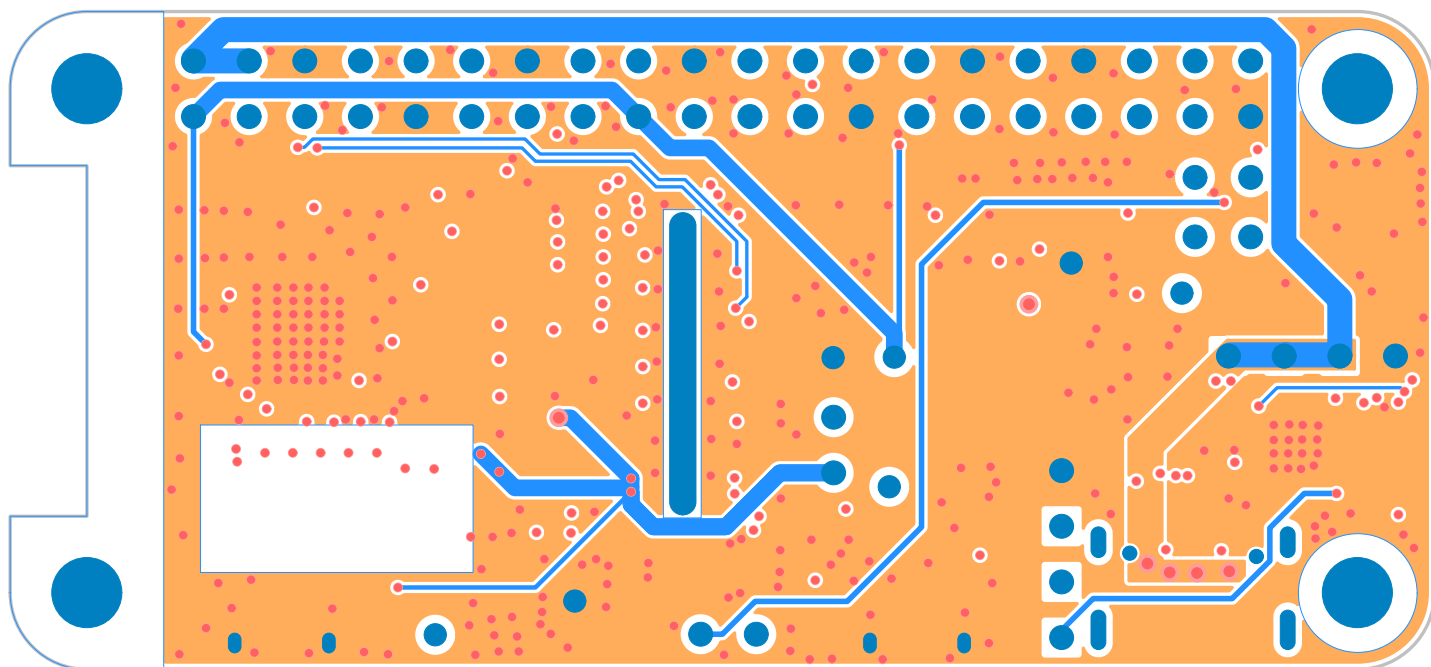
Note: H1/2/3/4 NPTH PAD and Hole Note: CN3 Pin17 Slotting/Cut Off

COMPONENT TOP		4 LAYER	
	EV720E00-3V0	2022-09-09	
Clearance CK	False Error	00016	
Connectivity CK	False Error	00000	
Plane Check	False Error	00000	
1			



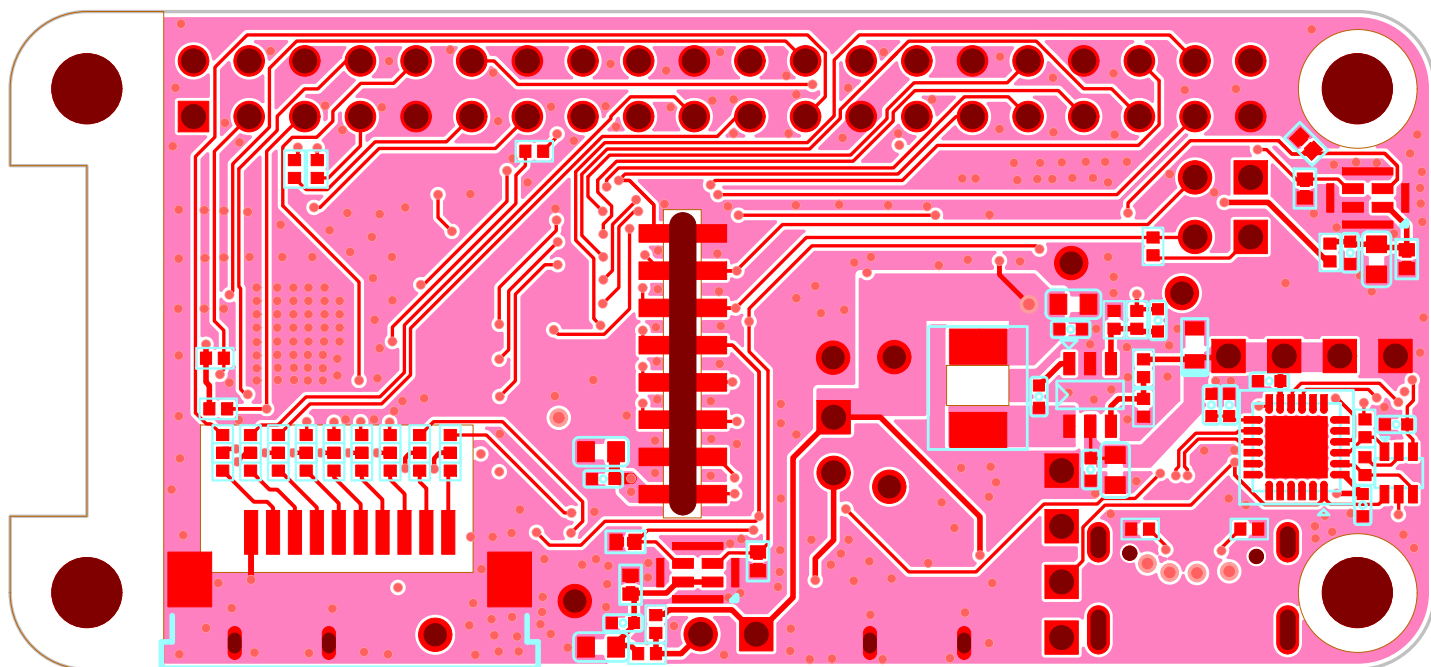
Note: H1/2/3/4 NPTH PAD and Hole Note: CN3 Pin17 Slotting/Cut Off

L2-GND		4 LAYER	
	EV720E00-3V0	2022-09-09	
Clearance CK	False Error	00016	
Connectivity CK	False Error	00000	
Plane Check	False Error	00000	
2			



Note: H1/2/3/4 NPTH PAD and Hole Note: CN3 Pin17 Slotting/Cut Off

L3-VCC		4 LAYER	
	EV720E00-3V0	2022-09-09	
Clearance CK	False Error	00016	
Connectivity CK	False Error	00000	
Plane Check	False Error	00000	
3			

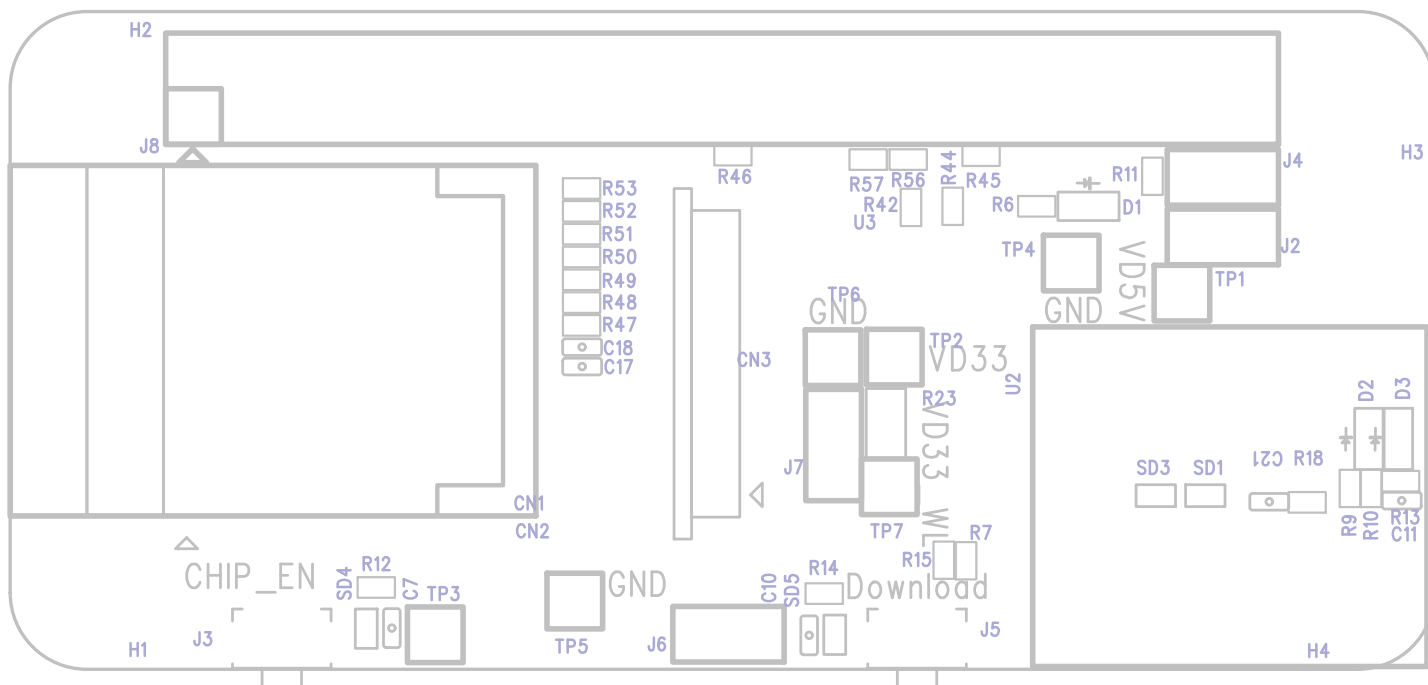


Note: H1/2/3/4 NPTH PAD and Hole Note: CN3 Pin17 Slotting/Cut Off

COMPONENT BOTTOM		4 LAYER	
	EV720E00-3V0	2022-09-09	
Clearance CK	False Error	00016	
Connectivity CK	False Error	00000	
Plane Check	False Error	00000	
4			

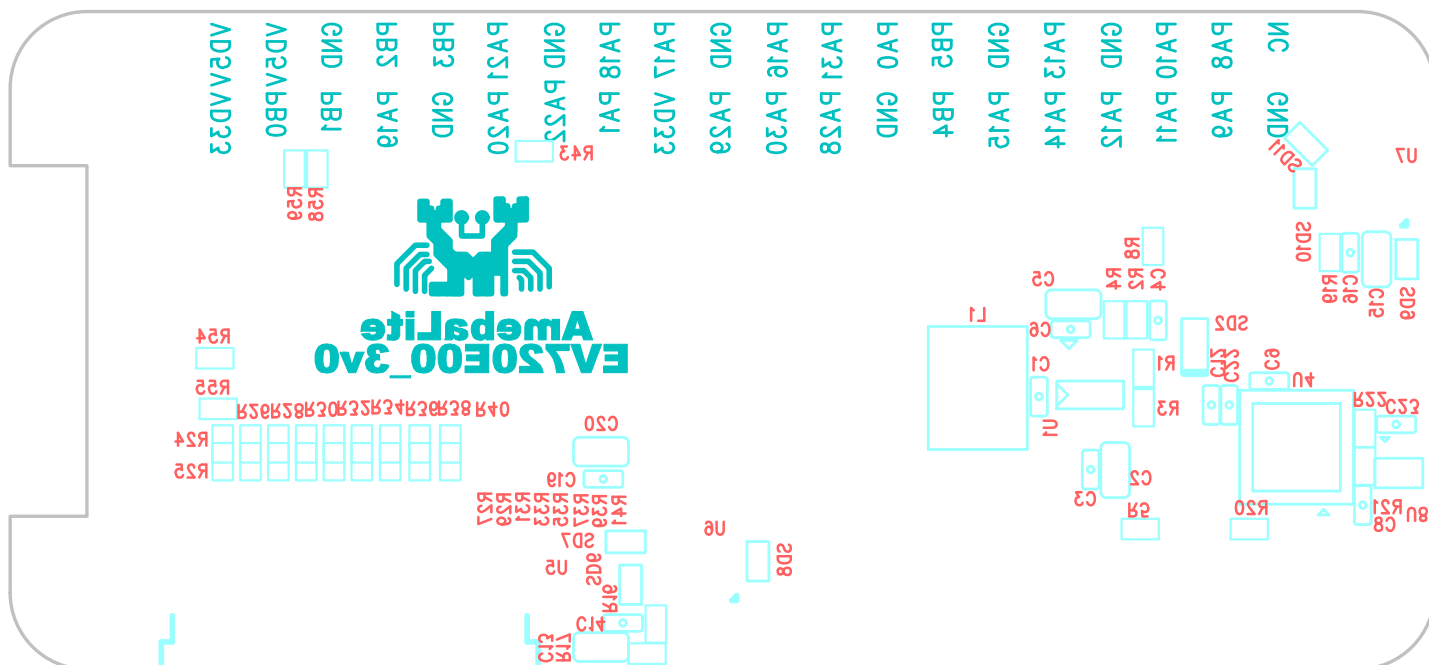


SMD COMPONENTS (43M)		4 LAYER	
	EV720E00-3V0	2022-09-09	
Clearance CK	False Error	00016	
Connectivity CK	False Error	00000	
Plane Check	False Error	00000	
		1 2 3 4	



Note: H1/2/3/4 NPTH PAD and Hole Note: CN3 Pin17 Slotting/Cut Off

COMPONENT (TOP)		4 LAYER	
	EV720E00-3V0	2022-09-09	
Clearance CK	False Error	00016	
Connectivity CK	False Error	00000	
Plane Check	False Error	00000	
1			



Note: H1/2/3/4 NPTH PAD and Hole Note: CN3 Pin17 Slotting/Cut Off

COMBINED SCREEN (BOM)		4 LAYER	
	EV720E00-3V0	2022-09-09	
Clearance CK	False Error	00016	
Connectivity CK	False Error	00000	
Plane Check	False Error	00000	
4			