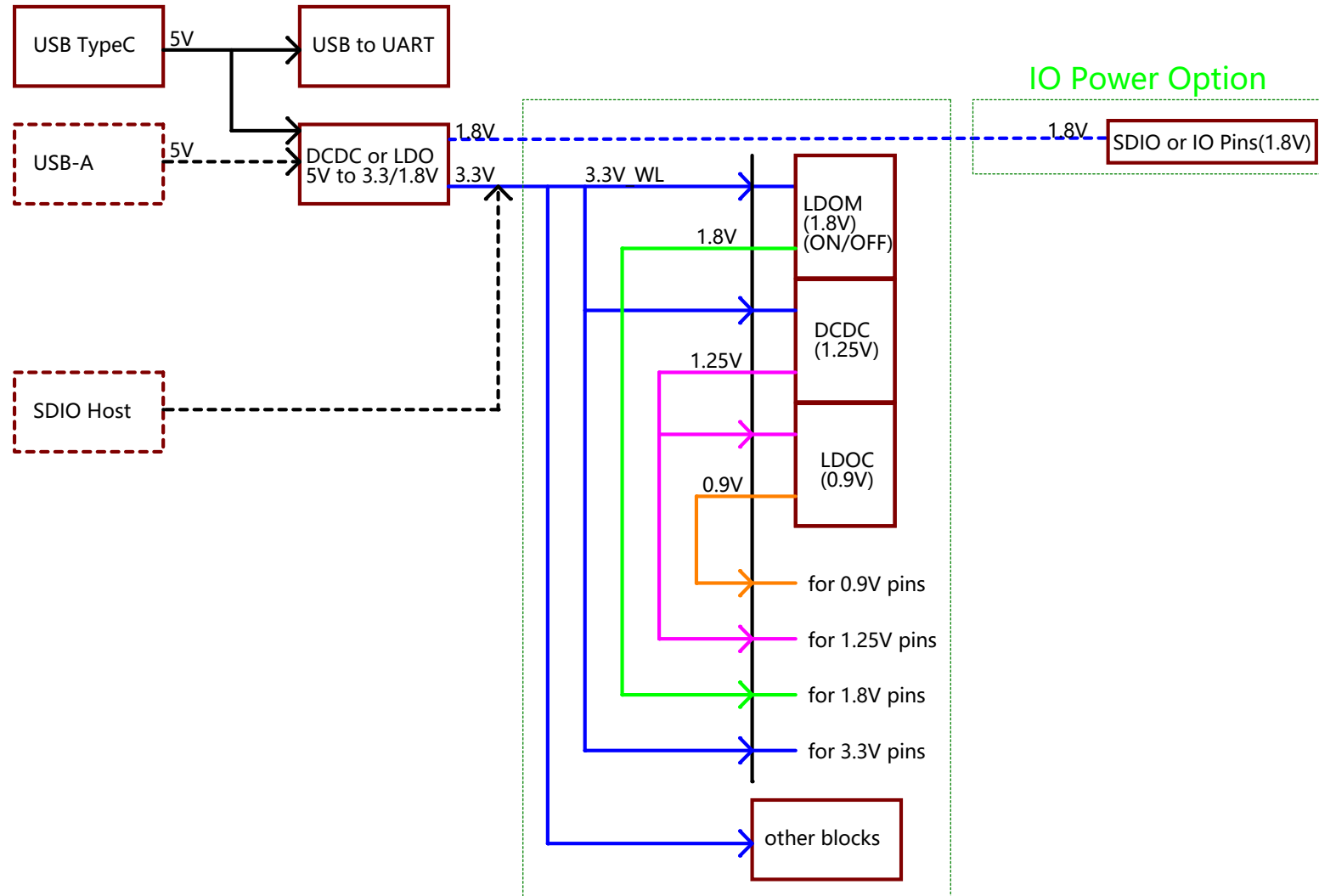


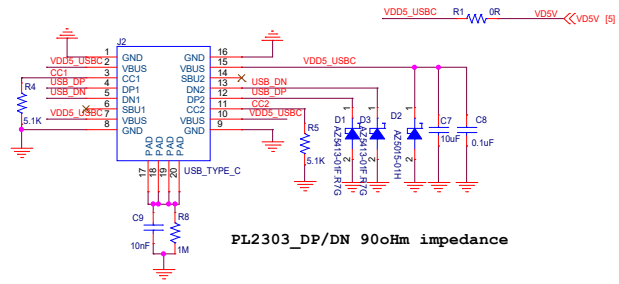
Title			
G2			
Size	Document Number		Rev
B			1.0
Date:	Friday, September 12, 2025	Sheet	1 of 5

Power Tree

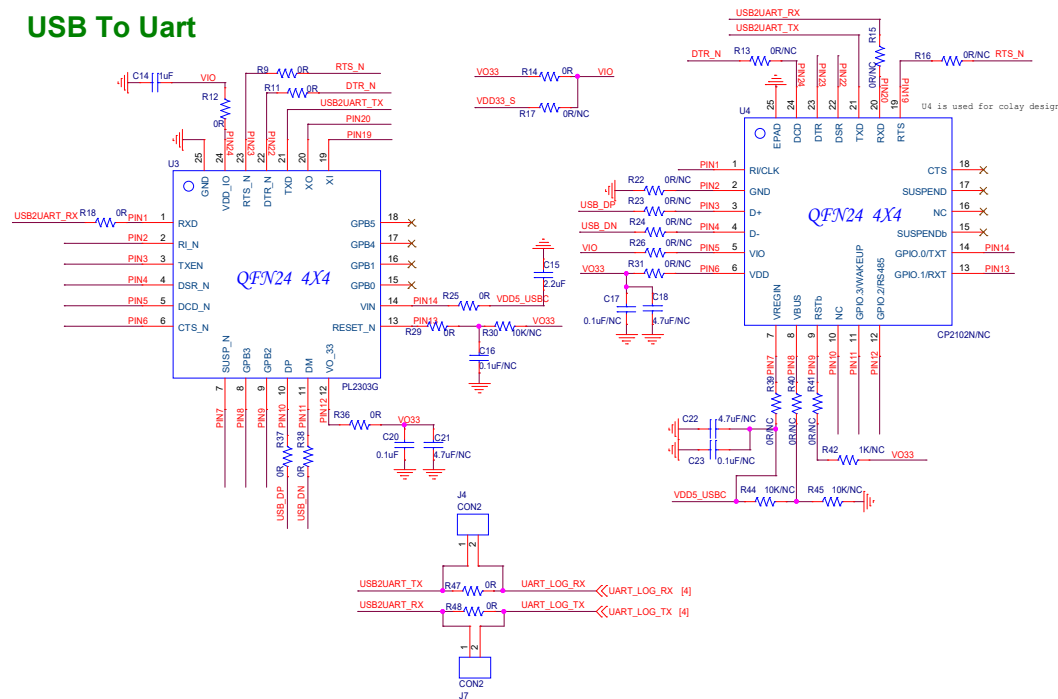


Title			
G2			
Size	Document Number		Rev
B			1.0
Date:	Friday, September 12, 2025	Sheet	2 of 5

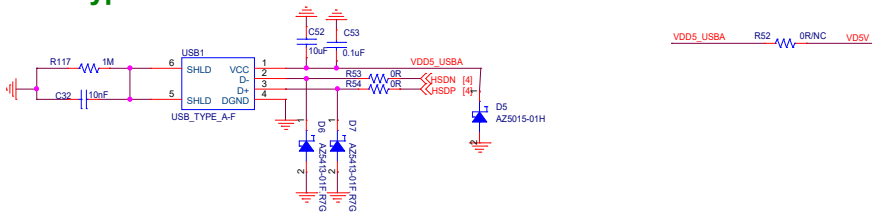
USB Type-C



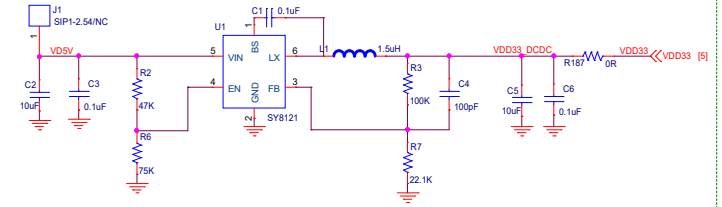
USB To uart



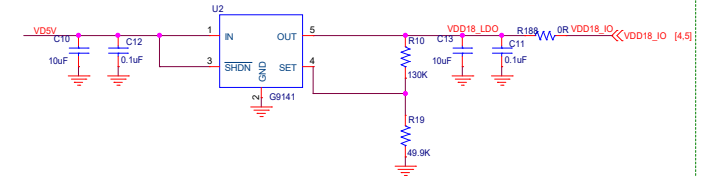
USB Type-A



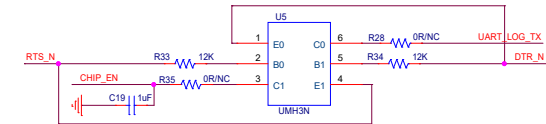
+5V to +3.3V DCDC



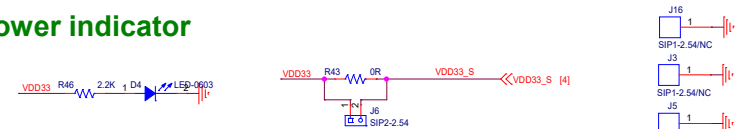
+5 V to +1.8V LDO RVSD



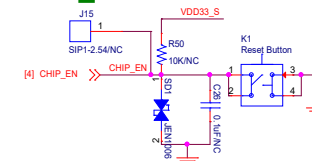
Auto Download



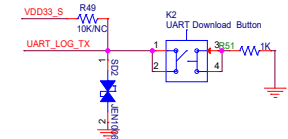
Power indicator



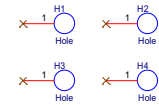
CHIP_EN Button



Download Button

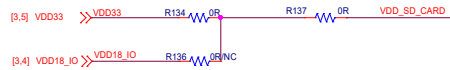
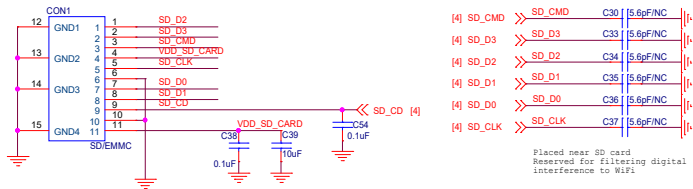


Hole



Title		
G2		
Size	Document Number	
C		
Date:	Friday, September 12, 2025	Sheet 3 of 5
Rev	1.0	

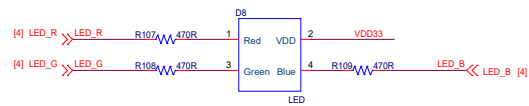
SDIO



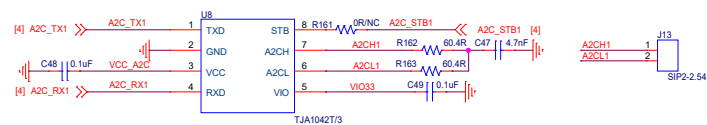
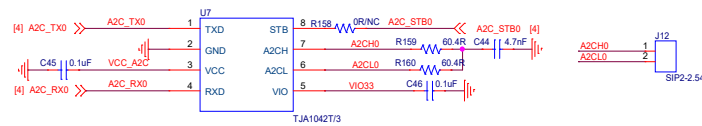
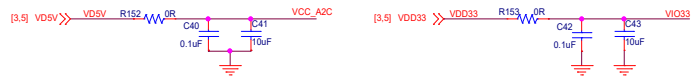
	SDIO Operating Voltage	Whether the IC power supply is SDIO
R137&R136	1.8V	NO
R137&R134	3.3V	YES

When R137&R136 is used, the SDIO operating voltage is 1.8V.
When R137&R134 is used, the SDIO operating voltage is 3.3V. In this case, the IC can be powered independently or by SDIO

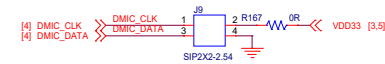
USER LED



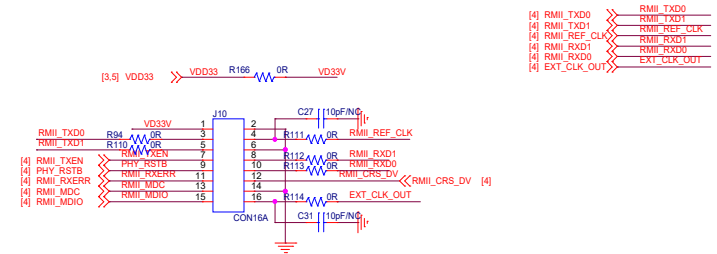
A2C



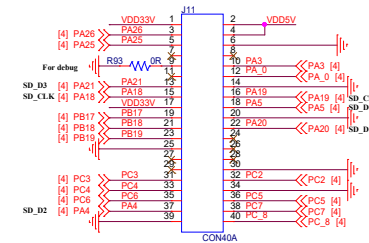
DMIC



RMII



40 Pin Header



CTC/ADC Touch

