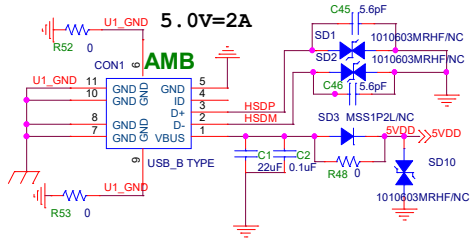
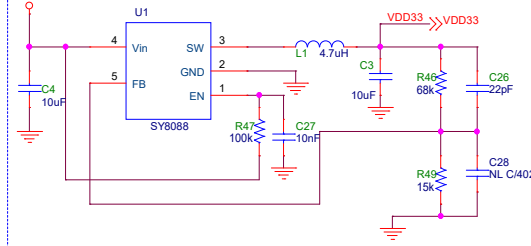


VBUS USB 1 INPUT(Device for Ameba)



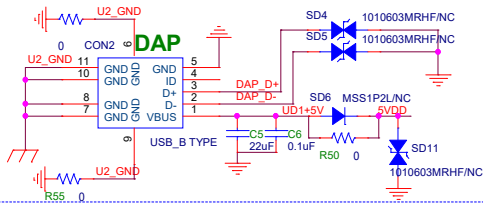
+5V --> +3.3V



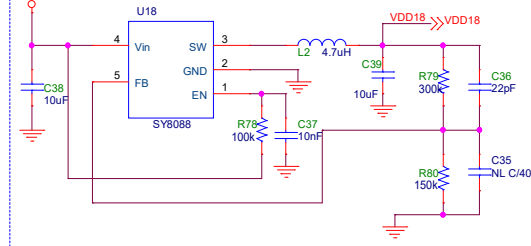
Power indicator



VBUS USB 2 INPUT(Device for DAP)



+5V --> +1.8V

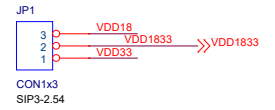


HSDP
HSDM

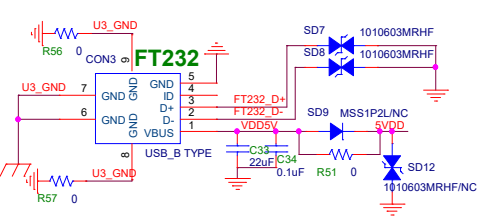
DAP_D+
DAP_D-

FT232_D+
FT232_D-

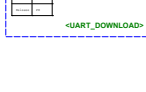
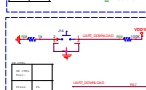
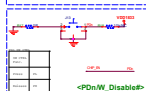
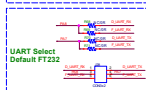
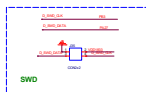
UD1+5V



VBUS USB 3 INPUT(Device for FT232RQ)



Title			
ARMEBA_MB			
Size	Document Number		Rev
Custom	DC Power		1.0
Date:	Sheet 1 of 2		



[Complete Pin-Mux Table pls Check Datasheet of Relative Chip](#)

[illegible]

DIGITAL PS4-7: ADC
PA25-26: I2C1

TOUCH KEY0/ID_OPG/LED8
TOUCH KEY1/LP_12C_SCL
TOUCH KEY2/LP_12C_SDA
TOUCH KEY3/LED8/UART_TXD
RES0/PWM/LCD_D6/RS_U01_SPI_MISO/KEY_C0LG/LP_UART_TXD/LP_12C_SDA
RES0/PWM/LCD_D7/RS_U01_SPI_MOSI/KEY_C0LI/LP_UART_RXD/LP_12C_SCL

GPIO4

DIGITAL

PIN2: UART

PIN	FUNCTION
0	AOUT0_P/SGPIO/LED12/TRSW_P/12S_CLK
1	AOUT0_P/GPIO_X6/LCD_CS
2	AOUT0_P/GPIO_X7
3	AOUT1_P/QMC_PWA/12S_MS
4	SWO_CLK/ADC_CH
5	ADC_CHA1_P/DART_TX0/LED6/DINC_CLK/
6	ADC_CHA2_P/DART_TX0/SGPIO_LED7/DINC_DATA/DART_LOG_RXD
7	
8	
9	
10	
11	
12	
13	
14	
15	

