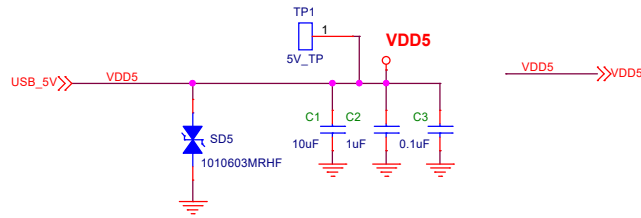
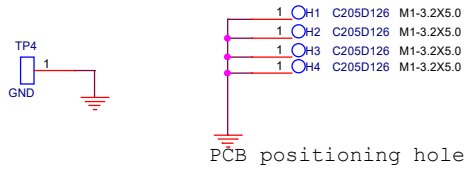


# DC POWER & LED & KEY MATRIX & GPIO

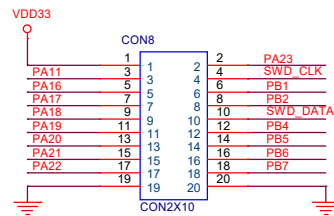
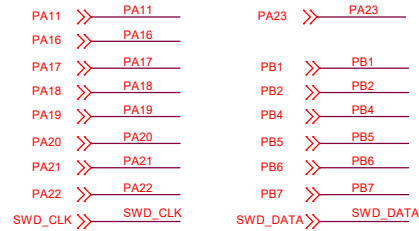
**+5V USB Input**



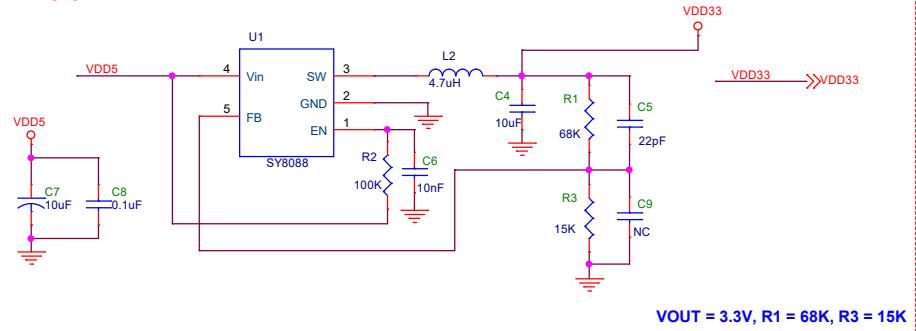
**GND**



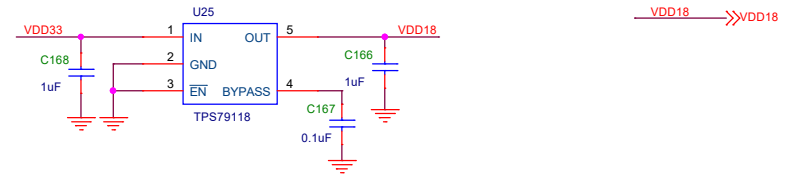
**GPIO**



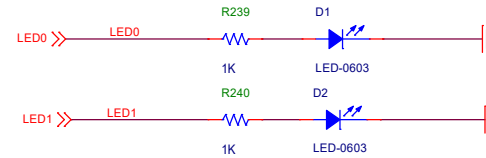
**5V --> 3.3V**



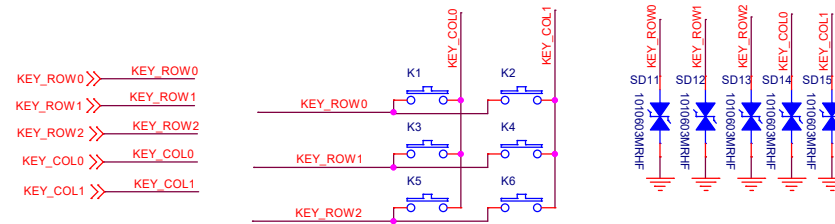
**VOUT = 3.3V, R1 = 68K, R3 = 15K**



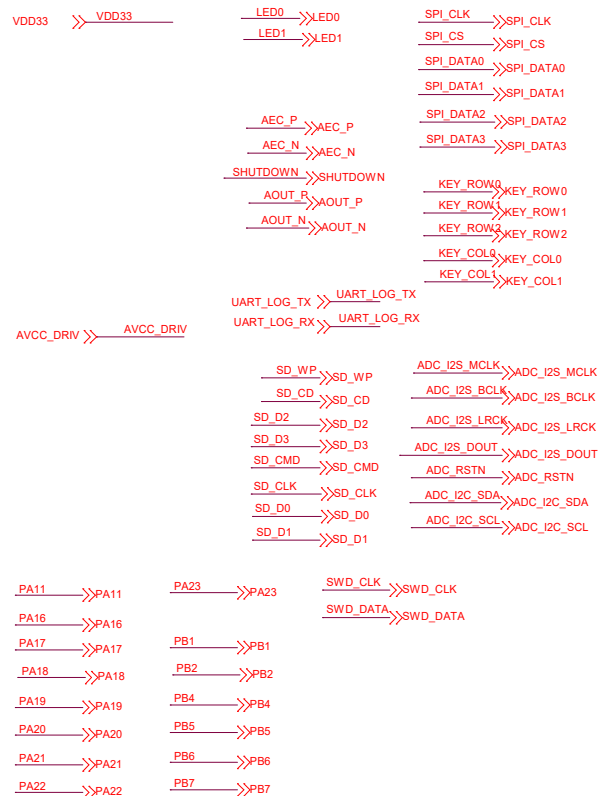
**LED**



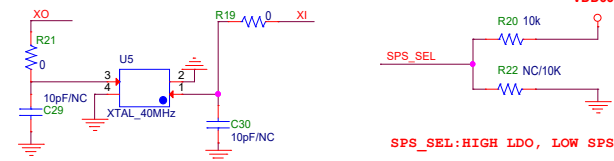
**KEY MATRIX**



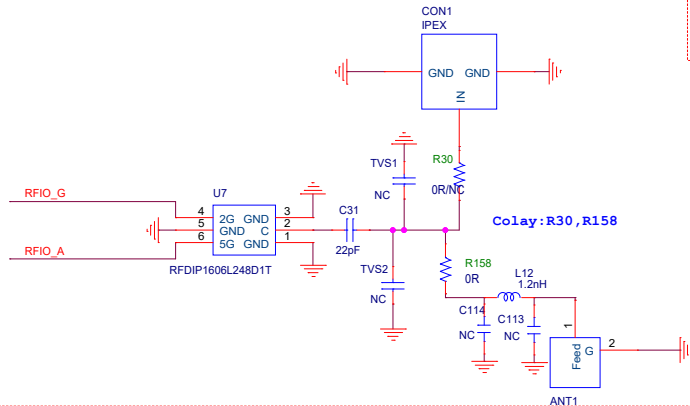
## RTL8722D



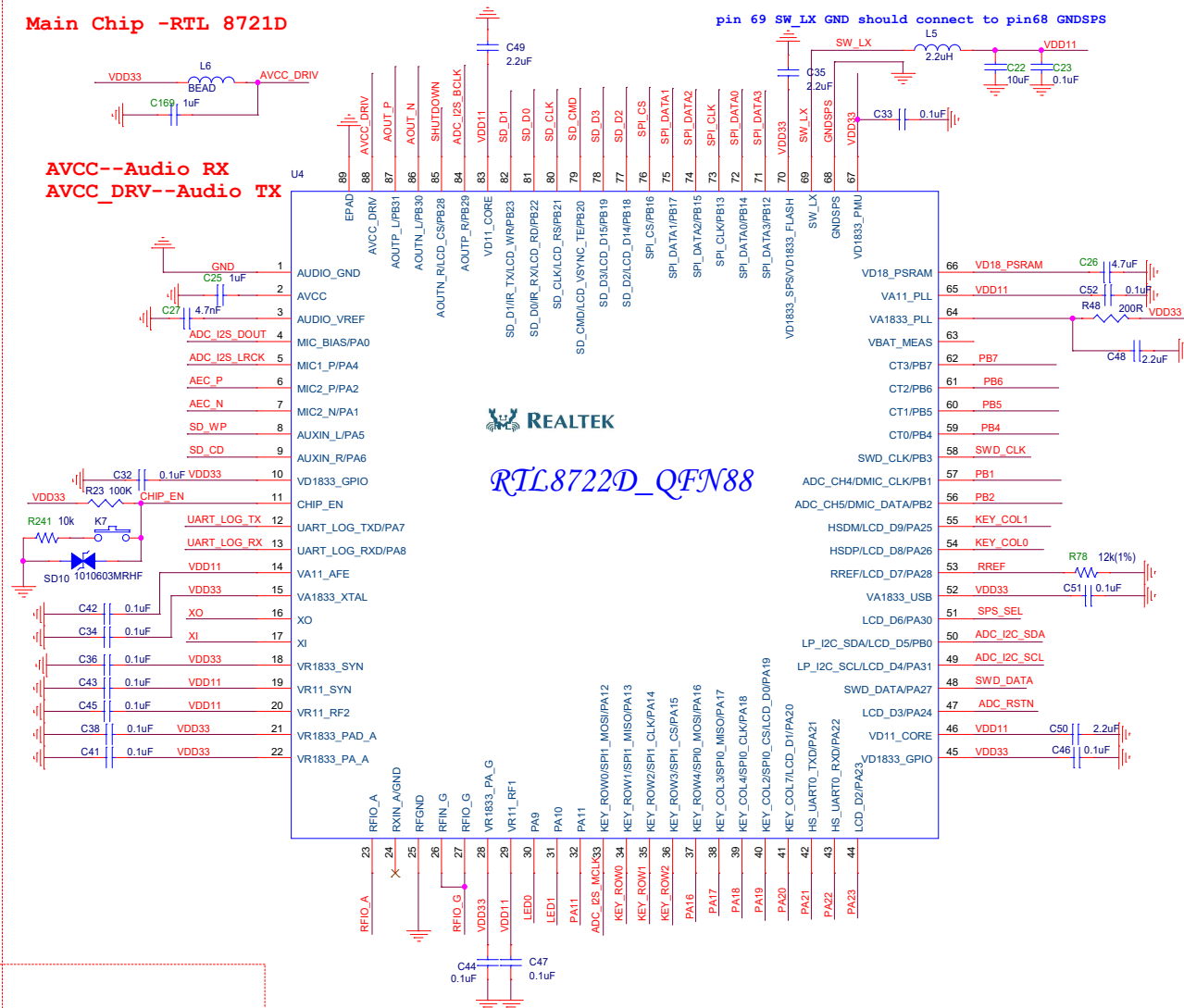
## Crystal Circuit



## RF Trace



## Main Chip -RTL 8721D

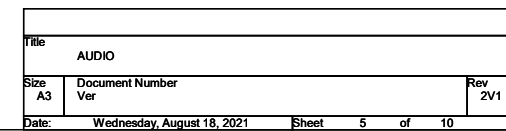


Title			
RTL8722D_QFN88			
Size Custom	Document Number Ver	Rev 2V	
Date:	Wednesday, August 18, 2021	Sheet	3 of 10

## 1

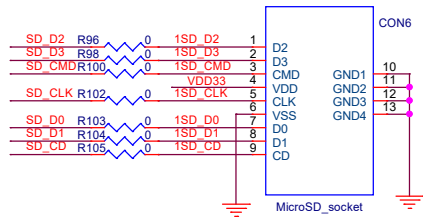
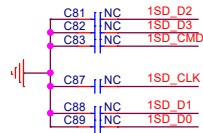
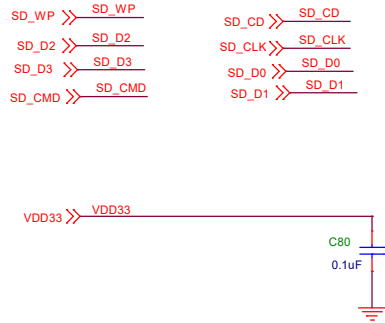


# A

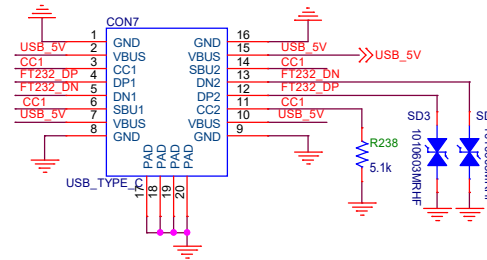


# SD CARD & USB IF & USB2UART & FLASH

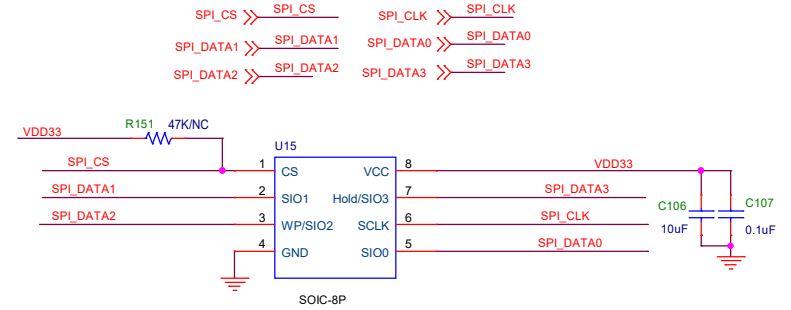
## SD CARD



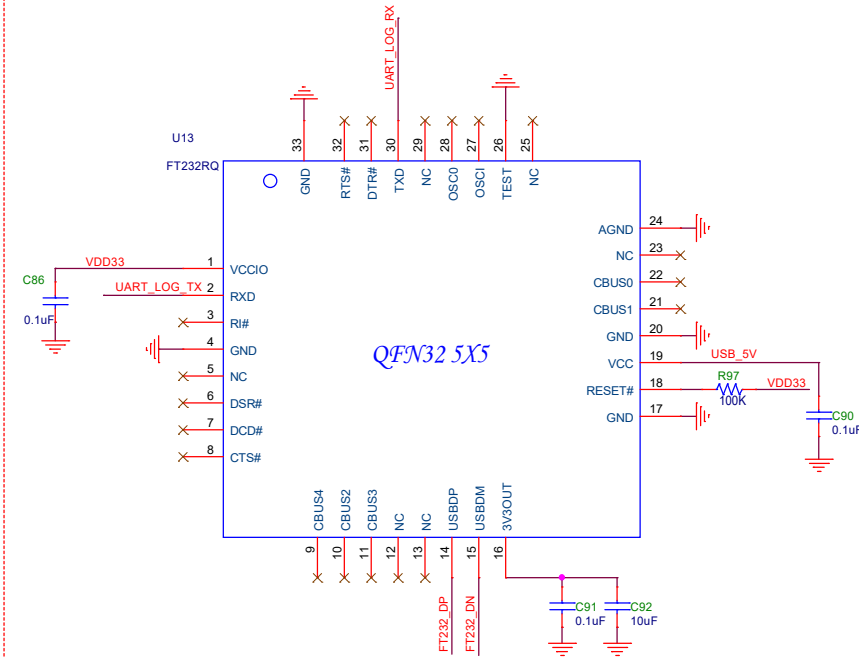
## USB TYPE C



## FLASH



## USB2UART FT232



## UART DOWNLOAD

